



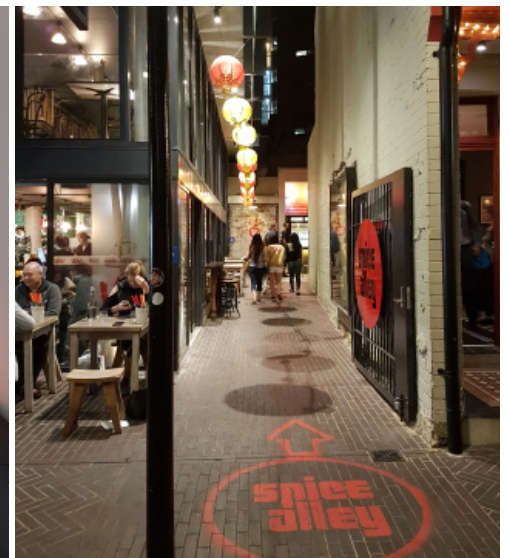
# Iglu Broadway

## COOL INNER-CITY LANEWAY LIVING



Situated right opposite UTS and a stone's throw from Notre Dame and Sydney Uni there is no getting any closer to campus than with Iglu Broadway.

Nestled in the iconic Central Park Precinct with access to a wide variety of eateries, shops and nightlife available as well as multiple transport options to get around the city, this is the perfect student hangout if convenience living is for you. The locale benefits from the rich social history embedded in the area bringing character and charm right to the middle of the city.



**IGLU BROADWAY.** 9 Kensington Street, Chippendale NSW 2008 // +61 2 8024 8640 // [broadway@iglu.com.au](mailto:broadway@iglu.com.au) // [www.iglu.com.au/broadway](http://www.iglu.com.au/broadway)



### LOCATION IS EVERYTHING

	DISTANCE		TIME
CENTRAL PARK MALL	0.1 KM		1 MINS
UTS SYDNEY	0.4 KM		4 MINS
SYDNEY UNIVERSITY	1.0 KM		11 MINS
NOTRE DAME SYDNEY	0.4 KM		5 MINS
UNSW	6.0 KM		30 MINS
CENTRAL TRAIN STATION	0.6 KM		7 MINS
SYDNEY CBD	1.9 KM		20 MINS
CHINATOWN	0.9 KM		10 MINS
SYDNEY AIRPORT	5.8 KM		21 MINS

All times and distances are approximate only

**WHAT IS WHERE?** // 1. University of Technology 2. Notre Dame University 3. University of Sydney 4. Central Railway Station 5. Central Bus Interchange 6. Central Park Precinct and Kensington Street 7. Broadway Shopping Centre 8. Market City / Paddy's Market 9. Chinatown 10. Powerhouse Museum 11. Seymour Centre

# ROOM FOR EVERYONE

## SHARE WITH OTHERS

Live with friends or make new ones in a cool 4, 5 or 6 bedroom fully furnished shared apartment.

COMMON AREAS ARE EQUIPPED WITH:

- › HD Smart television
- › Air-conditioning and heating
- › Couch, coffee table and ottomans
- › Dining table and chairs
- › Kitchen with oven, microwave, stovetop, refrigerator/freezer

YOUR BEDROOM INCLUDES:

- › Private en-suite or shared bathroom
- › Air-conditioning and heating
- › King-single bed
- › Study desk, chair and pin-board
- › Bookshelf, built-in wardrobe and full length mirror

## LIVE ON YOUR OWN

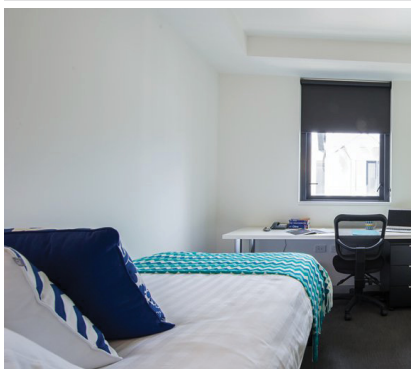
With your own living and study space in a studio apartment, you enjoy a little extra privacy but still benefit from having lots of friends next door and down the hall.

ALL STUDIOS ARE EQUIPPED WITH:

- › HD television
- › King single or double bed
- › Table and chairs
- › Private bathroom with toilet and shower
- › Air-conditioning and heating
- › Study desk, chair, lamp
- › Pinboard and bookshelf
- › Built-in wardrobe and full length mirror
- › Kitchenette with microwave oven, 2-burner stovetop, refrigerator/freezer



All of this plus your water, electricity, gas is included in your weekly rent along with all of the awesome facilities below



 ACCESSIBLE APARTMENTS AVAILABLE

**NATIONAL RENTAL AFFORDABILITY SCHEME (NRAS)** Iglu Broadway student accommodation is supported by the National Rental Affordability Scheme (NRAS) with financial assistance from the Commonwealth Government and the New South Wales Government. NRAS rooms are rented at 20% discounts to the market rate of rent. If you apply for one of our NRAS rooms, we'll check your income upfront as part of the process. For details see [www.iglu.com.au/broadway](http://www.iglu.com.au/broadway)

## FIRST CLASS FACILITIES



### WI-FI INCLUDED\*

Stay connected anywhere in the building and watch movies on-demand.



### SECURITY & SUPPORT

CCTV, electronic card access to all areas and 24x7 onsite support.



### COOL EVENTS PROGRAM

Connect and make new friends at our regular events.



### SPACE TO STUDY

A range of private and group study spaces to make study a pleasure.



### GYM & EXERCISE AREA

Stay fit and healthy without leaving the building.



### THE GREAT OUTDOORS

Terraces to get some fresh air or cook up a storm on the BBQ.



### SOCIAL SPACES

Communal kitchen, lounge areas with large screen TVs, table tennis and more.



### ONSITE LAUNDRY FACILITIES

Access to washing machines and dryers whenever you need it.



### BICYCLE STORAGE AREA

A great form of exercise and environmentally friendly.

\* 10GB OF DATA PER MONTH IS INCLUDED IN YOUR WEEKLY FEE. UPGRADES ARE ALSO AVAILABLE.

MORE THAN A PLACE TO STAY, IGLU IS A PLACE TO LIVE. LEARN MORE AND START LIVING COOL TODAY.



**Iglu Broadway.** 9 Kensington Street, Chippendale NSW 2008  
+61 2 8024 8640 [broadway@iglu.com.au](mailto:broadway@iglu.com.au) [IgluBroadway](https://www.facebook.com/IgluBroadway)

#livecoolatiglu | [iglu.com.au/broadway](http://iglu.com.au/broadway)